

Southeast Portland Office for Lease

Copeland Building

135 SE Main, Portland, OR



Steve Robinson

Carolyn Pantier

70 NW Couch Suite 207
Portland, Oregon 97209

Phone (503)224-2446

Fax (503)224-2311

www.venerableproperties.com

Available: Suite 201
1,320 sq feet

Lease Rate: Negotiable

Features include:

- Open floor plan
- Hardwood floors
- High ceilings
- Private bathroom
- Three privates
- Abundant natural light



Close in second floor office features hardwood floors, high ceilings, many windows, skylight and open floor plan.

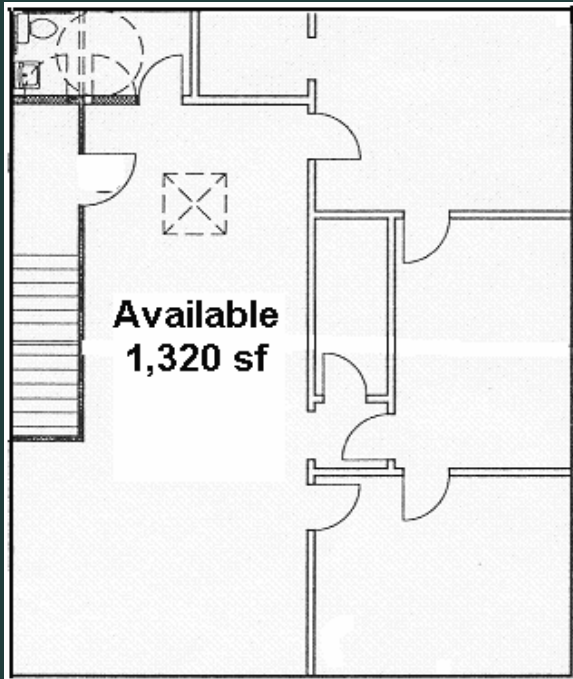
Includes air conditioning, private restroom and lots of storage space.

Off street parking available. Zoned IG1-General Industrial

135 SE Main

Portland, OR

2nd floor—1,320 sq ft



SE 2nd Avenue

SE Main

